



On-line PICASSO PROJECT

**Comprehensive Catalogue Raisonné
Prof. Dr. Enrique Mallen**

1894



Paysage avec un soldat à cheval. A Coruña. 1-February/1894. Graphite pencil & conté pencil on paper. [12,5 x 19] 13,5 x 19,5 cm. Museu Picasso, Barcelona. Carnet A Coruña 1. Donation 1970.

OPP.94:025; MPB:111.396; P.I:29; PP.94:001; MG.15:139p

Esquisses. A Coruña. [1-February]/1894. Graphite pencil & pen on paper. 19,5 x 13,5 cm. Museu Picasso, Barcelona. Carnet A Coruña 1. Donation 1970.

OPP.94:063; C:15; MPB:112.479; PP.94:102





Annotations. A Coruña. February/1894. Graphite on paper. 12,6 x 19 cm. Museu Picasso, Barcelona. Donation 1970.

OPP.94:181; MPB:111.396r

Couverture. A Coruña. February~September/1894. Mixed media. 13,5 x 19,5 cm. Museu Picasso, Barcelona. Carnet A Coruña 1. Donation 1970.

OPP.94:045; MPB:110.919c





Façade de maison de A Coruña. A Coruña. [5-February]/1894. Graphite pencil on paper. 13,5 x 19,5 cm. Museu Picasso, Barcelona. Carnet A Coruña 1. Donation 1970.

OPP.94:006; MPB:111.397; PP.94:039; TO.94*:2

La malade. A Coruña. [April]/1894. Oil on wood. 14 x 21,5 cm. The Picasso Estate.

OPP.94:022; P.I:32; PP.94:037;
CK.10:12; JF.94a:2; JR.91:50p;
MG.10b*:66p; MG.15*:130; PJ.02*:11





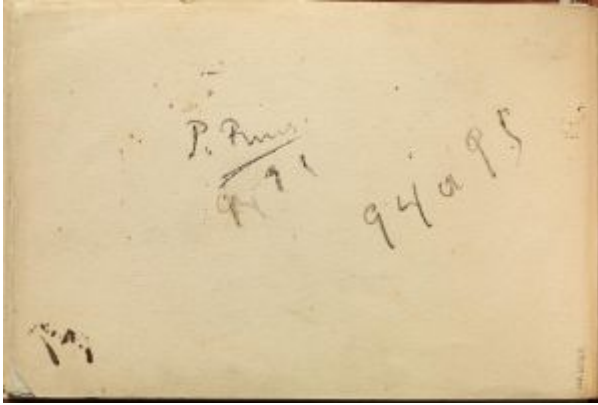
Don José, la tête bandé. A Coruña. 19-April/1894. Graphite on paper. 20,3 x 14,5 cm. Museu Picasso, Barcelona. Donation 1970.

OPP.94:026; C:396; MPB:110.928.638; P.I:30; PP.94:038; NS.01:273

Étude de buste de femme (signé A. Amorós). A Coruña. June/1894. Graphite pencil on paper. 19,5 x 13,5 cm. Museu Picasso, Barcelona. Carnet A Coruña 1. Donation 1970.

OPP.94:048; MPB:111.404; PP.94:049; MG.15:271p





Signature et date. A Coruña. June/1894. Black pencil on paper. 19 x 12,6 cm. Museu Picasso, Barcelona. Donation 1970.

OPP.94:185; MPB:111.404r

Trois cavaliers. A Coruña. 26-June/1894. India ink on paper. 8 x 22 cm. Private collection.

OPP.94:157; PP.94:048; Z.XXI:14; MG.15:137p





Le couple. A Coruña. Second-Half/1894 [~1895]. Oil on wood. 35 x 19 cm. Museo de Málaga. (Inv 345).

OPP.94:014; P.I:37; PP.94:050; Z.VI:2; AC.46:1; MG.15*:145; PJ.02*:15; RE.77:26p; RI.13*:175p; UP.00:19

Nu avec une massue. A Coruña. 27-July/1894. Graphite pencil on paper. 19,5 x 13,5 cm. Museu Picasso, Barcelona. Carnet A Coruña 1. Donation 1970.

OPP.94:085; MPB:111.413; PP.94:064





Étude académique. A Coruña. 27-July/1894. Graphite on paper. 19 x 12,6 cm. Museu Picasso, Barcelona. Donation 1970.

OPP.94:186; MPB:111.413r; PP.94:065

Courses de taureaux. A Coruña. 2-September/1894. Pen, brown ink & pencil on paper. 12,7 x 19,2 cm. Musée Picasso, Paris.

OPP.94:005; MPP:401.r; PP.94:086;
Z.XXI:19; BJ.19*:n/a; BL.91*:4;
JG.84*:3; MG.15*:48; PA.93a*:6;
PD.06*:68p; PJ.02*:10





'La Coruña'. A Coruña. 16-September/1894. Pen, brown ink & pencil on paper. [20,2 x 26,3] 21 x 26 cm. Musée Picasso, Paris. Dation 1979.

OPP.94:016; MPP:402.r; P.I:31; PP.94:088; Z.XXI:10; AB.00*:4; AM.08:13p; BJ.19*:n/a; BL.91*:97; BP.21:525p; BR.83a:12p; CK.10:7; CW.89:369p; DB.89:7p; EC.02:12; EC.16:6; JG.84*:4; JR.91:47p; MG.15*:66; MM.97*:W4; NS.01:134; PD.06*:n/a; PJ.02*:9; PP.19:29p; PS.00:18p; TO.94:48p; TO.97:17p; UP.00:5; WW.91:33p

'La Coruña'. A Coruña. 16-September/1894. Pen, brown ink & pencil on paper. 21 x 26,8 cm. Musée Picasso, Paris. Dation 1979.

OPP.94:017; MPP:402.v; PP.94:089; Z.XXI:11; AB.00*:5; BL.91*:97; CW.89:370p; JG.84*:4; MG.15*:67; PD.06*:n/a; PJ.02*:9; PP.19:30-31p; WW.91:33p





Annotations. A Coruña. 20-September/1894. Graphite pencil on paper. 13,5 x 19,5 cm. Museu Picasso, Barcelona. Carnet A Coruña 1. Donation 1970.

OPP.94:046; MPB:112.480

Buste de femme decoiffée de profil. A Coruña. 20-September/1894. Graphite pencil on paper. 13,5 x 19,5 cm. Museu Picasso, Barcelona. Carnet A Coruña 1. Donation 1970.

OPP.94:049; MPB:111.407; PP.94:090





Tête de femme decoiffée de trois-quarts. A Coruña. 20-September/1894. Graphite pencil on paper. 13,5 x 19,5 cm. Museu Picasso, Barcelona. Carnet A Coruña 1. Donation 1970.

OPP.94:054; MPB:111.408; PP.94:091

Deux têtes. A Coruña. [20-September]/1894. Oil on cardboard. 13,2 x 18 cm. Museu Picasso, Barcelona. Donation 1970.

OPP.94:071; MPB:110.114; PP.94:031;
TO.97*:8





'Azul y Blanco'. A Coruña. 24-September/1894.
Pen & sepia ink on paper. [20,3 x 26,5] 20,2 x
26,3 cm. Museu Picasso, Barcelona.

OPP.94:019; C:7; MPB:110.863v; PP.94:093;
AB.00*:9; AT.84:34; CW.89:369p; DB.00*:n/a;
MG.15:179p; NS.01:133; PJ.02*:7; TK.02*:n/a;
TO.97*:5a; WR.80:16p

Cour de ferme. A Coruña. October/1894.
Oil on panel. 13,1 x 22,1 cm. Sotheby's.
#272, L00102, 06/28/00.

OPP.94:189





Fillette assise brodant. A Coruña. 12-October/1894. Graphite pencil on paper. 19,5 x 13,5 cm. Museu Picasso, Barcelona. Carnet A Coruña 2. Donation 1970.

OPP.94:082; MPB:111.511; PP.94:101; JR.91:46p; MG.15*:114

'Azul y Blanco'. A Coruña. 28-October/1894. Graphite pencil on paper. 20,5 x 26,5 cm. Musée Picasso, Paris.

OPP.94:015; MPP:403.v; P.I:33;
PP.94:094; Z.XXI:12; AB.00*:11;
BL.91*:98; BP.21:528p; GP.96:31p;
JG.84*:6; MG.15*:64; MM.97*:B3;
PD.06*:86p; PJ.02*:8; WW.91:33p





'Azul y Blanco'. A Coruña. 28-October/1894.
Graphite on paper. [20,2 x 26,3] 21 x 26,8 cm.
Musée Picasso, Paris. Dation 1979.

OPP.94:018; MPP:403.r; P.I:34; PP.94:095;
Z.XXI:13; AB.00*:10; AM.08:12p; BL.91*:98;
BP.21:528p; CW.89:370p; JG.84*:6; MG.15*:65;
PA.19d*:2; PD.06*:n/a; TO.97:16p; WW.91:33p

Couverture. A Coruña.
November/1894~January/1895. Mixed
media. 13,5 x 19,5 cm. Museu Picasso,
Barcelona. Carnet A Coruña 2. Donation
1970.

OPP.94:097; MPB:110.923c





Homme saluant une jeune femme. A Coruña. 6-November/1894. Watercolor on paper. 19,5 x 13,5 cm. Museu Picasso, Barcelona. Carnet A Coruña 2. Donation 1970.

OPP.94:092; MPB:111.490r; PP.9495:014; MG.15*:108

Personnage avec perruque, casaque, bottes et bâton. A Coruña. [6-November]/1894. Graphite pencil & watercolor on paper. 19,5 x 13,5 cm. Museu Picasso, Barcelona. Carnet A Coruña 2. Donation 1970.

OPP.94:129; MPB:111.489; PP.9495:011





Femme couchée dormant. A Coruña. 8-November/1894. Pen on paper. 13,5 x 19,5 cm. Museu Picasso, Barcelona. Carnet A Coruña 2. Donation 1970.

OPP.94:070; MPB:111.499; PP.9495:031

Vinos El Rivero. A Coruña. [20-November]/1894. Oil on porcelain plate. 37 cm. Private collection, Madrid. Formerly Christie's. #132, 11/12/92.

OPP.94:153; PP.94:110; MG.15*:77





Portrait de Lola Ruiz Picasso, sœur de l'artiste. A Coruña. 1-December/1894. Oil on canvas. 29 x 19 cm. Museo Picasso, Málaga. On temporary loan from Fundación Almine & Bernard Ruiz-Picasso para el Arte.

OPP.94:003; P.I:42; PP.94:104; Z.XXI:1; DP.20*:1; GC.96:39p; GS.03:1.1; MG.15*:122; NC.17*:2; PJ.02*:12

Portrait de son oncle Baldomero Ghiara. A Coruña. 3-December/1894. Oil on card [OiC]. 9 x 12 cm. Private collection. Formerly Christie's. #133, 11/12/92..

OPP.94:154; PP.94:105; Z.XXI:411; BS.55:1; JR.91:58p





Portrait de vieil homme. A Coruña.
End/1894~Early/1895. Oil on canvas. 15,8 x 15,5
cm. Private collection.

OPP.94:160

Étude académique: bras. A Coruña. 1894. Charcoal &
pencil on paper. 45 x 33,4 cm. Museu Picasso,
Barcelona.

OPP.94:001; C:405; MPB:110.843; P.I:25; PP.94:036;
AB.08*:n/a; JR.91:44p; MF.01*:1; MG.15*:13;
WW.91:36p





Le ferme. A Coruña. 1894. Lead pencil on paper. 13,5 x 19,5 cm. Museu Picasso, Barcelona. Carnet A Coruña 1. Donation 1970.

OPP.94:007; MPB:111.399; PP.94:041; TO.94*:4

Façade d'une ferme de Coruña. A Coruña. 1894. Lead pencil on paper. 13,5 x 19,5 cm. Museu Picasso, Barcelona. Carnet A Coruña 1. Dation 1970.

OPP.94:008; MPB:111.398; PP.94:040; TO.94*:3





Le bateau de pêche. A Coruña. 1894. Lead pencil on paper. 13,5 x 19,5 cm. Museu Picasso, Barcelona. Carnet A Coruña 1. Dation 1970.

OPP.94:009; MPB:111.400; PP.94:042; TO.94*:5

Route locale. A Coruña. 1894. Lead pencil on paper. 13,5 x 19,5 cm. Museu Picasso, Barcelona. Carnet A Coruña 1. Dation 1970.

OPP.94:010; MPB:111.401; PP.94:043; TO.94*:6





Après-midi dans la campagne. A Coruña. 1894.
Lead pencil on paper. 13,5 x 19,5 cm. Museu
Picasso, Barcelona. Carnet A Coruña 1. Dation
1970.

OPP.94:011; MPB:111.403; PP.94:046;
MG.15:215p; TO.94*:7

Hameau de Galice. A Coruña. 1894. Lead
pencil on paper. 13,5 x 19,5 cm. Museu
Picasso, Barcelona. Carnet A Coruña 1.
Dation 1970.

OPP.94:012; MPB:111.406; PP.94:053;
MG.15:215p; TO.94*:8



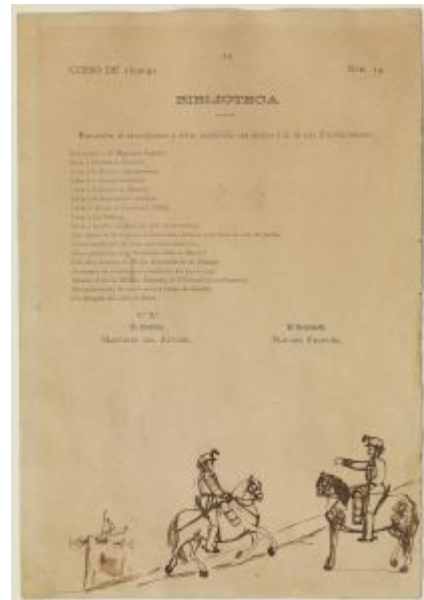


Le ferme. A Coruña. 1894. Lead pencil on paper. 13,5 x 19,5 cm. Museu Picasso, Barcelona. Carnet A Coruña 1. Dation 1970.

OPP.94:013; MPB:111.407r; PP.94:092; MG.15:217p; TO.94*:9

Cavaliers. A Coruña. 1894. Pen on paper. 27,1 x 18,5 cm. Museu Picasso, Barcelona.

OPP.94:020; C:380; MPB:110.866; PP.94:022; PA.19d*:3





Étude académique: pied. A Coruña. 1894.
Charcoal & conté crayon on paper. 33,2 x 49,7 cm.
Museu Picasso, Barcelona.

OPP.94:021; C:474; MPB:110.799; PP.94:029;
CH.10*:72p; GM.11:5p; JG.84*:10; LA.16*:97p;
MM.97:73p; NS.01:95; UP.00:6



Étude académique: tête de faune. A
Coruña. 1894. Charcoal & conté pencil on
paper. 50,5 x 48,3 cm. Museu Picasso,
Barcelona. Donation 1970.

OPP.94:023; MPB:110.875; P.I:26;
PP.94:026; AB.08*:n/a; GD.11*:43;
GP.96:24p; MG.15*:21



La bataille. A Coruña. 1894. India ink on paper [Obverse of *Cinq personnages devant un homme*]. 13 x 20 cm. The Picasso Estate.

OPP.94:024; P.I:27; PP.94:004; Z.XXI:8; MG.15*:59

Personnage de théâtre. A Coruña. 1894. Pen & ink on paper. 16 x 11,2 cm. The Picasso Estate.

OPP.94:027; P.I:35; PP.94:107; Z.VI:40; JR.91:41p





Personnages de théâtre. A Coruña. 1894. Ink & lead pencil. 21 x 13,4 cm. The Picasso Estate.

OPP.94:028; P.I:36; PP.94:106; Z.VI:11

L'oiseau. A Coruña. 1894 [1895]. Oil on wood. 10,5 x 14,5 cm. Museo Picasso, Málaga. On temporary loan from Fundación Almine & Bernard Ruiz-Picasso para el Arte.

OPP.94:030; P.I:39; PP.9495:002;
Z.VI:19; DP.20*:3; MG.15*:43; NC.17*:4;
PJ.02*:32





Études. A Coruña. 1894 [~1895]. Violet aquatint. 19 x 12,5 [13,5] cm. Museu Picasso, Barcelona. Carnet A Coruña 2. Donation 1970.

OPP.94:031; MPB:111.497r; P.I:40; PP.9495:028; MG.15:271p

Études de quatre taureaux. A Coruña. [1893~] 1894 [~1895]. India ink. 34,5 x 17 cm. Musée Picasso, Paris.

OPP.94:032; MPP:404; P.I:41; PP.9495:057; Z.XXI:17; BL.91*:3; JC.01b*:2; PA.07a*:74p





Nature morte. A Coruña. 1894. Oil on paper [OIC]. 10,2 x 13 cm. Private collection. Formerly Christie's. #131, 11/12/92.

OPP.94:034; PP.94:109

Portrait de Don Isidoro Brocos. A Coruña. 1894. Charcoal on paper. 19,5 x 13,5 cm. Museu Picasso, Barcelona. Carnet A Coruña 1. Dation 1970.

OPP.94:035; MPB:111.418; PP.94:074; MG.15*:159; PJ.02:37p





Autoportrait. A Coruña. 1894. Lead pencil on paper. 19,5 x 13,5 cm. Museu Picasso, Barcelona. Carnet A Coruña 1. Dation 1970.

OPP.94:036; MPB:111.411; PP.94:060; JR.91:46p; MG.15*:105; PB.21:2; PJ.02:39p; YP.13:34p



Étude académique: portrait de femme (Niobide). A Coruña. 1894. Pencil & charcoal on paper. 53 x 36,5 cm. Private collection, Furtwangen.

OPP.94:038; KR.11*:56p; MD.02*:19p; RD.11*:1



Étude de personnage nu à genoux tenant un couteau. A Coruña. 1894. Lead pencil on paper. [12,7 x 19,2] 12,6 x 19,3 cm. Musée Picasso, Paris.

OPP.94:039; MPP:401.v; PP.94:087; PD.06*:n/a

Étude académique: pied. A Coruña. 1894. Conté pencil & charcoal on paper. 26,8 x 32,8 cm. Museu Picasso, Barcelona. Donation 1970.

OPP.94:040; C:475; MPB:110.793; PP.94:028





Étude académique: athlète. A Coruña. 1894. Graphite pencil on paper. 19,5 x 13,5 cm. Museu Picasso, Barcelona. Carnet A Coruña 1. Donation 1970.

OPP.94:041; MPB:111.409; PP.94:056

Étude académique: homme trainant un objet. A Coruña. 1894. Graphite pencil on paper. 19,5 x 13,5 cm. Museu Picasso, Barcelona. Carnet A Coruña 1. Donation 1970.

OPP.94:042; MPB:111.405; PP.94:051





Étude académique: nu masculin. A Coruña. 1894. Graphite pencil on paper. 13,5 x 19,5 cm. Museu Picasso, Barcelona. Carnet A Coruña 1. Donation 1970.

OPP.94:043; MPB:111.424; PP.94:097

Étude académique: nu masculin. A Coruña. 1894. Graphite pencil on paper. 19,5 x 13,5 cm. Museu Picasso, Barcelona. Carnet A Coruña 1. Donation 1970.

OPP.94:044; MPB:111.410; PP.94:058





Étude: duel d'épéistes. A Coruña. 1894.
Graphite pencil on paper. 10,6 x 15 cm. Museu
Picasso, Barcelona. Donation 1970.

OPP.94:047; MPB:110.246r; PP.94:007

Buste de garçon au béret. A Coruña.
1894. Graphite pencil on paper. 12,5 x 10,5
cm. Museu Picasso, Barcelona. Carnet A
Coruña 1. Donation 1970.

OPP.94:050; MPB:111.415; PP.94:068



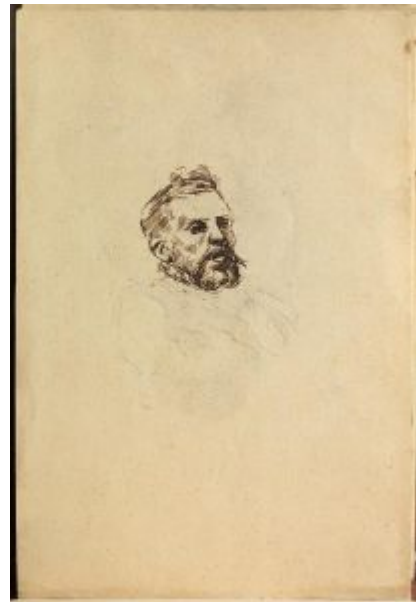


Buste de personnage féminin de trois-quarts. A Coruña. 1894.
Graphite pencil on paper. 19,5 x 13,5 cm. Museu Picasso, Barcelona.
Carnet A Coruña 1. Donation 1970.

OPP.94:051; MPB:111.412; PP.94:062

Buste de personnage masculin, de trois-quarts. A
Coruña. 1894. Graphite pencil & pen on paper. 19,5 x 13,5
cm. Museu Picasso, Barcelona. Carnet A Coruña 1. Donation
1970.

OPP.94:052; MPB:111.421; PP.94:080





Paysanne galicienne de profil. A Coruña. 1894. Graphite pencil on paper. 19,5 x 13,5 cm. Museu Picasso, Barcelona. Carnet A Coruña 1. Donation 1970.

OPP.94:053; MPB:111.420; PP.94:078

Tête de fillette. A Coruña. 1894. Graphite pencil on paper. 19,5 x 13,5 cm. Museu Picasso, Barcelona. Carnet A Coruña 1. Donation 1970.

OPP.94:055; MPB:111.408r; PP.94:055





Tête de fillette couchée. A Coruña. 1894.
Graphite pencil on paper. 10,5 x 12,5 cm. Museu Picasso, Barcelona. Carnet A Coruña 1. Donation 1970.

OPP.94:056; MPB:111.415r; PP.94:069

Caricatures. A Coruña. 1894. Pen & graphite pencil on paper. 31,5 x 27,7 cm. Museu Picasso, Barcelona. Donation 1970.

OPP.94:057; C:398; MPB:110.648; PP.94:011





Pigeonnier. A Coruña. 1894. Graphite pencil & ink on paper. 19,5 x 13,5 cm. Museu Picasso, Barcelona. Carnet A Coruña 1. Donation 1970.

OPP.94:058; MPB:111.402; PP.94:044; MG.15*:104

Esquisses. A Coruña. 1894. Graphite pencil on paper. 19,5 x 13,5 cm. Museu Picasso, Barcelona. Carnet A Coruña 1. Donation 1970.

OPP.94:059; MPB:111.410r; PP.94:059





Étude de personnage masculin. A Coruña. 1894. Graphite pencil on paper. 19,5 x 13,5 cm. Museu Picasso, Barcelona. Carnet A Coruña 1. Donation 1970.

OPP.94:060; MPB:111.421r; PP.94:081

Esquisses. A Coruña. 1894. Graphite pencil on paper. 13,5 x 19,5 cm. Museu Picasso, Barcelona. Carnet A Coruña 1. Donation 1970.

OPP.94:061; C:16; MPB:111.424r; PP.94:098





Esquisses caricaturales. A Coruña. 1894. Graphite pencil on paper. 13,5 x 19,5 cm. Museu Picasso, Barcelona. Donation 1970.

OPP.94:062; MPB:111.425r; PP.94:100

Esquisses. A Coruña. 1894. Pen on paper. 19,5 x 13,5 cm. Museu Picasso, Barcelona. Carnet A Coruña 1. Donation 1970.

OPP.94:064; MPB:111.403r; PP.94:047





Esquisses. A Coruña. 1894. Pen & graphite pencil on paper. 19,5 x 13,5 cm. Museu Picasso, Barcelona. Carnet A Coruña 1. Donation 1970.

OPP.94:065; MPB:111.402r; PP.94:045

Esquisses. A Coruña. 1894. Pen & graphite pencil on paper. 13,5 x 19,5 cm. Museu Picasso, Barcelona. Carnet A Coruña 1. Donation 1970.

OPP.94:066; MPB:111.406r; PP.94:054





Esquisses. A Coruña. 1894. Graphite pencil, conté pencil & pen on paper. 19,5 x 13,5 cm. Museu Picasso, Barcelona. Carnet A Coruña 1. Donation 1970.

OPP.94:067; MPB:111.418r; PP.94:075

Esquisses. A Coruña. 1894. Graphite pencil on paper. 13,5 x 19,5 cm. Museu Picasso, Barcelona. Carnet A Coruña 1. Donation 1970.

OPP.94:068; MPB:111.425; PP.94:099





Esquisses. A Coruña. 1894. Graphite pencil & pen on paper. 13,5 x 19,5 cm. Museu Picasso, Barcelona. Carnet A Coruña 1. Donation 1970.

OPP.94:069; MPB:111.414r; PP.94:067

Deux esquisses. A Coruña. 1894. Graphite pencil on paper. 19,5 x 13,5 cm. Museu Picasso, Barcelona. Carnet A Coruña 1. Donation 1970.

OPP.94:072; MPB:111.409r; PP.94:057





Deux scènes de Don Quichotte. A Coruña. 1894. Graphite pencil on paper. 32 x 21,6 cm. Museu Picasso, Barcelona. Donation 1970.

OPP.94:073; C:392; MPB:110.860; PP.94:014; PP.19:111p

Le maure Tarfe et un esclave. A Coruña. 1894. Graphite pencil on paper. 19,5 x 13,5 cm. Museu Picasso, Barcelona. Carnet A Coruña 1. Donation 1970.

OPP.94:074; C:17; MPB:111.422; PP.94:082; MG.15*:107; NS.01:275





Étude pour le décor d'un plafond à caissons.

A Coruña. 1894. Graphite pencil on paper. 13,5 x 19,5 cm. Museu Picasso, Barcelona. Carnet A Coruña 1. Donation 1970.

OPP.94:075; MPB:111.416r; PP.94:071

La bataille et autres dessins. A Coruña. 1894.
Graphite pencil on paper. 21 x 27,2 cm. Museu Picasso,
Barcelona. Donation 1970.

OPP.94:078; C:371; MPB:110.862; PP.94:016





Lola et sa poupée. A Coruña. 1894. Graphite pencil on paper. 19,5 x 13,5 cm. Museu Picasso, Barcelona. Carnet A Coruña 1. Donation 1970.

OPP.94:079; MPB:111.416; PP.94:070

Lola et sa poupée. A Coruña. 1894. Graphite pencil on paper. 19,5 x 13,5 cm. Museu Picasso, Barcelona. Carnet A Coruña 1. Donation 1970.

OPP.94:080; MPB:111.417; PP.94:072





Fillette, la tête appuyée sur la main. A Coruña. 1894. Graphite pencil on paper. 19,5 x 13,5 cm. Museu Picasso, Barcelona. Carnet A Coruña 1. Donation 1970.

OPP.94:081; MPB:111.414; PP.94:066

Garçon en costume marin, dessinant. A Coruña. 1894. Graphite pencil on paper. 19,5 x 13,5 cm. Museu Picasso, Barcelona. Carnet A Coruña 1. Donation 1970.

OPP.94:083; MPB:111.420r; PP.94:079





Fillette arrosant. A Coruña. 1894. Graphite pencil on paper. 19,5 x 13,5 cm. Museu Picasso, Barcelona. Carnet A Coruña 1. Donation 1970.

OPP.94:084; MPB:111.412r; PP.94:063

Nu à l'épée. A Coruña. 1894. Graphite pencil & pen on paper. 19,5 x 13,5 cm. Museu Picasso, Barcelona. Carnet A Coruña 1. Donation 1970.

OPP.94:086; MPB:111.423; PP.94:084





Personage féminin élégante. A Coruña. 1894. Graphite pencil on paper. 19,5 x 13,5 cm. Museu Picasso, Barcelona. Carnet A Coruña 1. Donation 1970.

OPP.94:088; MPB:111.405r; PP.94:052

Personnage masculin fumant et autres dessins. A Coruña. 1894. Graphite pencil & pen on paper. 19,5 x 13,5 cm. Museu Picasso, Barcelona. Carnet A Coruña 1. Donation 1970.

OPP.94:089; MPB:111.419r; PP.94:077





Portrait de José Ruiz Blasco, père de l'artiste, de trois-quarts.
A Coruña. 1894. Graphite pencil & conté pencil on paper. 19,5 x 13,5 cm. Museu Picasso, Barcelona. Carnet A Coruña 1. Donation 1970.

OPP.94:090; MPB:111.419; PP.94:076; MG.15:283p

Portrait de Maria Picasso López, la mère de l'artiste. A Coruña. 1894 [1895]. Conté pencil on paper. 19 x 12,5 cm. Museu Picasso, Barcelona. Carnet A Coruña 1. Donation 1970.

OPP.94:091; MPB:111.411r; P.I:50; PP.94:061; JR.91:48p; MG.15:287p; NM.95:10p





Vétéran au lit du malade. A Coruña. 1894.
Graphite pencil on paper. 13,5 x 19,5 cm. Museu Picasso, Barcelona. Carnet A Coruña 1. Donation 1970.

OPP.94:093; MPB:111.422r; PP.94:083

Taureau et toreros. A Coruña. 1894.
Graphite pencil on paper. 13,5 x 19,5 cm.
Museu Picasso, Barcelona. Carnet A Coruña 1. Donation 1970.

OPP.94:094; MPB:111.423r; PP.94:085



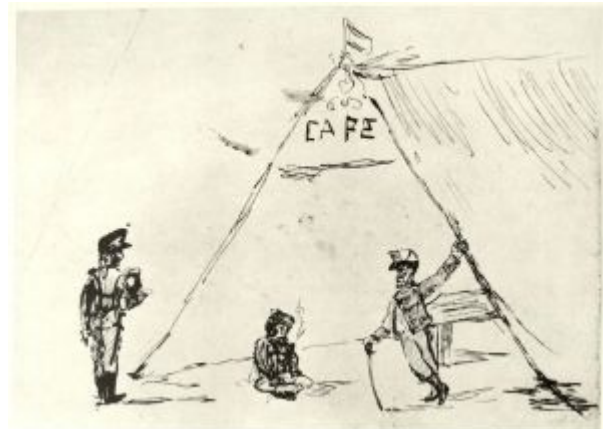


Carlista. A Coruña. 1894. Lead pencil on paper. 19,5 x 13,5 cm. Museu Picasso, Barcelona. Carnet A Coruña 1. Donation 1970.

OPP.94:095; MPB:111.417r; PP.94:073; MG.15*:106

Militaires sous la tente. A Coruña. 1894. Pen & India ink on paper [Obverse of *Deux cavaliers*]. 13,5 x 17,5 cm. Marina Picasso Collection. (Inv 16). Courtesy Galerie Jan Krugier, Geneva.

OPP.94:134; PP.94:002; Z.XXI:6; GS.85*:1; MG.15:175p





Deux cavaliers. A Coruña. 1894. Pen & India ink on paper [Reverse of *Militaires sous la tente*]. 13,5 x 17,5 cm. Marina Picasso Collection. (Inv 16). Courtesy Galerie Jan Krugier, Geneva.

OPP.94:135; PP.94:003; Z.XXI:7; GS.85*:2

Cinq personnages devant un homme. A Coruña. 1894. Pen & ink on paper [Reverse of *La bataille*]. 13 x 20 cm. Private collection.

OPP.94:136; PP.94:005; Z.XXI:9





Quatre personnages. A Coruña. 1894. Lead pencil on paper. 20 x 15 cm. Private collection.

OPP.94:137; PP.94:006; Z.XXI:20; MG.15*:71

Deux croquis: pigeonnier. A Coruña. 1894. Lead pencil on paper. 31 x 21,1 cm. Museu Picasso, Barcelona. Donation 1970.

OPP.94:138; C:374; MPB:110.477r; PP.94:008; MG.15:126p





Rideaux et sculpture. A Coruña. 1894. Oil on paper. 15,5 x 11 cm. Museu Picasso, Barcelona. Donation 1970.

OPP.94:139; MPB:110.119; PP.94:032

Don Quichotte et Sancho Pança naviguant sur une rivière (Étude). A Coruña. 1894. Lead pencil on paper. 26,4 x 20,2 cm. Museu Picasso, Barcelona. Donation 1970.

OPP.94:140; MPB:110.864; PP.94:018; HP.06a*:n/a





Caricatures divers. A Coruña. 1894. Lead pencil on paper. 10,3 x 13,3 cm. Museu Picasso, Barcelona. Donation 1970.

OPP.94:142; C:10; MPB:110.870r; PP.94:025

Colombe et autres esquisses. A Coruña. 1894. Lead pencil, pen & ink on paper. 26,5 x 20,4 cm. Museu Picasso, Barcelona. Donation 1970.

OPP.94:143; C:373; MPB:110.865r; PP.94:021





Le dialogue et autres croquis. A Coruña. 1894.
Lead pencil on paper. 10,3 x 13,3 cm. Museu
Picasso, Barcelona. Donation 1970.

OPP.94:144; C:385; MPB:110.870; PP.94:024

La procession et numéro de cirque. A Coruña. 1894.
Lead pencil on paper. 26,5 x 20,4 cm. Museu Picasso,
Barcelona. Donation 1970.

OPP.94:145; C:372; MPB:110.865; PP.94:020;
NS.01:38





Tête de vieil homme. A Coruña. 1894. Oil on paper. [11] 15,5 x 9,1 cm. Museu Picasso, Barcelona. Donation 1970.

OPP.94:148; MPB:110.122r; PP.94:034

Tête de femme. A Coruña. 1894. Oil on paper. 11 x 18,8 cm. Museu Picasso, Barcelona. Donation 1970.

OPP.94:149; MPB:110.112; PP.94:030





Homme au chapeau et Marocain. A Coruña. 1894. Pencil on paper. 21 x 27,2 cm. Private collection.

OPP.94:150; NS.01:274

Les parapluies. A Coruña. 1894. Pen & ink on paper. 32 x 21,6 cm. Museu Picasso, Barcelona. Donation 1970.

OPP.94:151; C:386; MPB:110.860r;
PP.94:015; PP.19:114p





Visages. A Coruña. 1894. Ink on paper. 9,5 x 13 cm. Private collection.

OPP.94:155; DO.07*:11

Étude académique: tête d'homme. A Coruña. 1894. Oil & graphite pencil on paper. 11 x 9 cm. Museu Picasso, Barcelona. Donation 1970.

OPP.94:156; MPB:110.122; PP.94:033; MG.15*:22





Picador et torero. A Coruña. 1894. Pencil on paper. 20 x 15,5 cm. Fundación Almine & Bernard Ruiz-Picasso para el Arte.

OPP.94:158; PP.94:013; Z.XXI:21; MG.15*:55

Chevals et délinquants. A Coruña. 1894. Pen & sepia ink on paper. 12,5 x 20,8 cm. Museu Picasso, Barcelona. Donation 1970.

OPP.94:159; MPB:110.609; PP.94:009; MG.15*:72





Pigeon et autres dessins. A Coruña. 1894. Lead pencil on paper. 26,4 x 20,2 cm. Museu Picasso, Barcelona. Carnet A Coruña 1. Donation 1970.

OPP.94:161; MPB:110.864r; PP.94:019

Gentil homme à l'épée. A Coruña. 1894. India ink on paper. 13 x 6,5 cm. Private collection.

OPP.94:162; PP.94:108; Z.XXI:18





Écriture du père de l'artiste. A Coruña. 1894.
India ink on paper. 21 x 13,7 cm. Private collection.

OPP.94:163; Z.VI:14

Portrait de la mère de l'artiste, et croquis divers. A Coruña. 1894. Ink & graphite on paper. 21 x 13 cm. Private collection.

OPP.94:164; PP.94:103; Z.VI:25





Portion anatomique. A Coruña. 1894. Oil on paper. 14 x 20 cm. Museu Picasso, Barcelona. Donation 1970.

OPP.94:167; MPB:110.106r

Fragment. A Coruña. 1894. Oil on paper. 15,5 x 11 cm. Museu Picasso, Barcelona. Donation 1970.

OPP.94:170; MPB:110.119r





Porte avec numéro 20. A Coruña. 1894. Oil on wood. 5,5 x 15,5 cm. Museu Picasso, Barcelona. Donation 1970.

OPP.94:174; MPB:110.190; PP.94:035

Croquis. A Coruña. 1894. Sepia ink & pen on paper. 12,5 x 20,8 cm. Museu Picasso, Barcelona. Donation 1970.

OPP.94:177; MPB:110.609r; PP.94:010





Scène taurine et croquis divers. A Coruña. 1894. Ink & pen, graphite, wash & watercolor on paper. 31,5 x 27,7 cm. Museu Picasso, Barcelona. Donation 1970.

OPP.94:178; MPB:110.648r; PP.94:012

Croquis et personnages géométriques.
A Coruña. 1894. Graphite on paper. 21 x 27,2 cm. Museu Picasso, Barcelona.
Donation 1970.

OPP.94:179; MPB:110.862r; PP.94:017



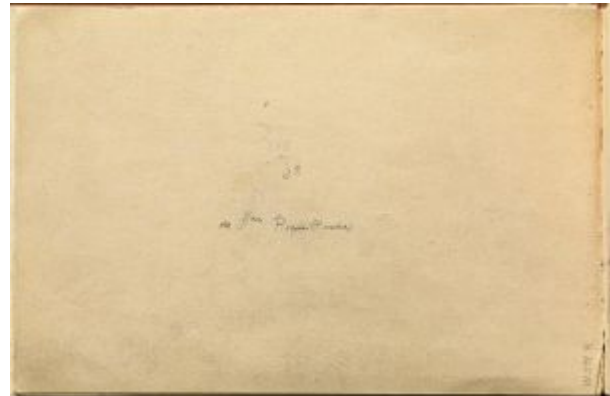


Têtes de cheval et mannequin. A Coruña. 1894. Sepia ink & pen on print paper. 27,1 x 18,5 cm. Museu Picasso, Barcelona. Donation 1970.

OPP.94:180; MPB:110.866r; PP.94:023

Annotations. A Coruña. 1894. Graphite on paper. 12,6 x 19 cm. Museu Picasso, Barcelona. Donation 1970.

OPP.94:182; MPB:111.398r





Annotations. A Coruña. 1894. Graphite on paper. 12,6 x 19 cm. Museu Picasso, Barcelona. Donation 1970.

OPP.94:183; MPB:111.399r

Annotations. A Coruña. 1894. Graphite on paper. 12,6 x 19 cm. Museu Picasso, Barcelona. Donation 1970.

OPP.94:184; MPB:111.400r





Portrait du père de l'artiste. A Coruña. 1894.
Graphite & Conté pencil on paper. 19 x 12,6 cm.
Museu Picasso, Barcelona. Donation 1970.

OPP.94:187; MPB:110.419; PP.9495:004

Esquisses. A Coruña. 1894~1895. Graphite pencil on paper.
19,5 x 13,5 cm. Museu Picasso, Barcelona. Carnet A Coruña
2. Donation 1970.

OPP.94:103; MPB:111.500; PP.9495:033





Buste de la mère de l'artiste. A Coruña.
1894~1895. Graphite pencil on paper. 13,5 x 19,5
cm. Museu Picasso, Barcelona. Carnet A Coruña 2.
Donation 1970.

OPP.94:107; MPB:111.496r; PP.9495:026

Esquisses diverses. A Coruña.
1894~1895. Graphite pencil on paper. 13,5
x 19,5 cm. Museu Picasso, Barcelona.
Carnet A Coruña 2. Donation 1970.

OPP.94:111; MPB:111.496; PP.9495:025





Esquisses incomplètes. A Coruña. 1894~1895. Graphite pencil on paper. 13,5 x 19,5 cm. Museu Picasso, Barcelona. Carnet A Coruña 2. Donation 1970.

OPP.94:116; MPB:111.507r; PP.9495:047

Étude de main gauche. A Coruña. 1894~1895. Graphite pencil on paper. 13,5 x 19,5 cm. Museu Picasso, Barcelona. Carnet A Coruña 2. Donation 1970.

OPP.94:125; MPB:111.510; PP.9495:051





Vase de fleurs. A Coruña. 1894~1895. Graphite pencil on paper. 19,5 x 13,5 cm. Museu Picasso, Barcelona. Carnet A Coruña 2. Donation 1970.

OPP.94:127; MPB:111.512; PP.9495:054

Homme lisant. A Coruña. 1894~1895. Oil on parchment. 14,5 x 14,5 cm. Museu Picasso, Barcelona. Donation 1970.

OPP.94:141; C:295; MPB:110.907; PP.9495:008; PA.20j*:7





Scène marocaine. A Coruña. 1894~1895. Pen, ink & lead pencil on paper. 12 x 18,3 cm. Museu Picasso, Barcelona. Donation 1970.

OPP.94:146; C:384; MPB:110.419r;
PP.9495:005; NS.01:276

Caricature: profil. A Coruña. 1894~1895. Conté pencil, lead pencil & ink on parchment. 14,5 x 14,5 cm. Museu Picasso, Barcelona. Donation 1970.

OPP.94:147; MPB:110.907r; PP.9495:009





Homme couché et femme couchés et autres croquis. A Coruña. 1894~1895. Graphite & Conté pencil on paper. 12,5 x 18,5 cm. Museu Picasso, Barcelona. Donation 1970.

OPP.94:176; MPB:111.505; PP.9495:042

Portrait de María de la Concepción Ruiz Picasso, sœur de l'artiste. A Coruña. 1894 [~1895]. Lead pencil on paper. 19,5 x 12,5 cm. Museu Picasso, Barcelona. Carnet A Coruña 2. Dation 1970.

OPP.94:002; MPB:111.489r; P.I:46; PP.9495:012; AH.88:5; GP.96:34p; JR.91:49p; NM.95:10p; RI.05:122p





La chambre de Dr. Ramón Pérez Costales. A Coruña. 1894~1895. Oil on wood. 9,7 x 15,2 cm. Museu Picasso, Barcelona. Donation 1970.

OPP.94:004; C:23; MPB:110.194; P.I:55;
PP.95:024; AC.88*:n/a; GP.96:32p; MG.15*:127;
TO.94*:n/a

Le mausolée. A Coruña. 1894~1895. Pen & sepia ink on white paper. 13 x 20,7 cm. Museu Picasso, Barcelona. Donation 1970.

OPP.94:029; C:390; MPB:110.255;
P.I:83; PP.9495:001; BA.18:40p;
BS.22:48p; JR.91:55p; LE.21:297p;
MG.15:333p; MM.97:73p; NS.01:96;
PP.19:63p; TO.97*:9a





Scène de intérieur du XVIIe siècle. A Coruña. 1894~1895. Graphite pencil on paper. 10,6 x 15 [15,2] cm. Museu Picasso, Barcelona. Donation 1970.

OPP.94:033; C:11; MPB:110.246; P.I:77;
PP.94:096; PJ.02*:20; WR.12b:23



Cinq études de mains. A Coruña. 1894~1895 [~1896]. Conté pencil on bluish grey paper. 31,2 x 29,3 cm. Museu Picasso, Barcelona. Donation 1970.

OPP.94:037; C:464; MPB:110.858;
PP.9596:060; MG.15*:26; PJ.02*:48;
TK.02*:n/a; TO.97*:26a



Portrait du père de l'artiste. A Coruña. 1894~1895. Graphite pencil on paper. 19,5 x 13,5 cm. Museu Picasso, Barcelona. Carnet A Coruña 2. Donation 1970.

OPP.94:076; MPB:111.500r; PP.9495:034; MG.15:262p

Trois esquisses et portrait de María de la Concepción Ruiz Picasso, sœur de l'artiste. A Coruña. 1894~1895. Graphite pencil on paper. 19,5 x 13,5 cm. Museu Picasso, Barcelona. Carnet A Coruña 2. Donation 1970.

OPP.94:077; MPB:111.499r; PP.9495:032; CR.84:99p; JR.21:9p; MG.15:289; TO.97:49p





Portrait du père de l'artiste. A Coruña. 1894~1895. Graphite pencil on paper. 19,5 x 13,5 cm. Museu Picasso, Barcelona. Carnet A Coruña 2. Donation 1970.

OPP.94:087; MPB:111.505r; PP.9495:043

Étude académique: Home nu. A Coruña. 1894~1895. Lead pencil & graphite pencil on paper. 19,5 x 13,5 cm. Museu Picasso, Barcelona. Carnet A Coruña 2. Donation 1970.

OPP.94:096; C:18; MPB:111.502; PP.9495:037





Autel avec ornement baroque avec drapeau catalan. A Coruña. 1894~1895. Graphite pencil on paper. 19,5 x 13,5 cm. Museu Picasso, Barcelona. Carnet A Coruña 2. Donation 1970.

OPP.94:098; MPB:111.501r; PP.9495:036; MG.15:272p

Homme. A Coruña. 1894~1895. Graphite & white wash on paper. [19,5 x 13,5] 18,5 x 12,5 cm. Museu Picasso, Barcelona. Carnet A Coruña 2. Donation 1970.

OPP.94:099; MPB:111.501; PP.9495:035





Esquisse. A Coruña. 1894~1895. Graphite pencil on paper. 19,5 x 13,5 cm. Museu Picasso, Barcelona. Carnet A Coruña 2. Donation 1970.

OPP.94:100; MPB:111.509; PP.9495:049

Esquisses. A Coruña. 1894~1895. Graphite pencil on paper. 13,5 x 19,5 cm. Museu Picasso, Barcelona. Carnet A Coruña 2. Donation 1970.

OPP.94:101; MPB:111.494; PP.9495:021





Esquisses. A Coruña. 1894~1895. Graphite pencil on paper. 13,5 x 19,5 cm. Museu Picasso, Barcelona. Carnet A Coruña 2. Donation 1970.

OPP.94:102; MPB:111.493; PP.9495:019

Esquisses. A Coruña. 1894~1895. Graphite pencil on paper. 13,5 x 19,5 cm. Museu Picasso, Barcelona. Carnet A Coruña 2. Donation 1970.

OPP.94:104; MPB:111.495; PP.9495:023





Esquisses. A Coruña. 1894~1895. Graphite pencil on paper. 19,5 x 13,5 cm. Museu Picasso, Barcelona. Donation 1970.

OPP.94:105; MPB:111.512r; PP.9495:055

Esquisses diverses. A Coruña. 1894~1895. Graphite pencil on paper. 13,5 x 19,5 cm. Museu Picasso, Barcelona. Carnet A Coruña 2. Donation 1970.

OPP.94:106; MPB:111.510r; PP.9495:052; TO.94:48p





Buste de la mère de l'artiste et autres esquisses. A Coruña. 1894~1895. Graphite pencil on paper. 19,5 x 13,5 cm. Museu Picasso, Barcelona. Carnet A Coruña 2. Donation 1970.

OPP.94:108; MPB:111.497; PP.9495:027

Caricature du torero. A Coruña. 1894~1895. Graphite pencil & conté pencil on paper. 13,5 x 19,5 cm. Museu Picasso, Barcelona. Carnet A Coruña 2. Donation 1970.

OPP.94:109; MPB:111.491; PP.9495:015





Esquisses. A Coruña. 1894~1895. Conté pencil on paper. 19,5 x 13,5 cm. Museu Picasso, Barcelona. Carnet A Coruña 2. Donation 1970.

OPP.94:110; MPB:111.503r; PP.9495:039

Esquisses diverses. A Coruña. 1894~1895. Graphite pencil on paper. 19,5 x 13,5 cm. Museu Picasso, Barcelona. Carnet A Coruña 2. Donation 1970.

OPP.94:112; MPB:111.504r; PP.9495:041





Esquisses diverses. A Coruña. 1894~1895. Graphite pencil & conté pencil on paper. 13,5 x 19,5 cm. Museu Picasso, Barcelona. Carnet A Coruña 2. Donation 1970.

OPP.94:113; MPB:111.492; PP.9495:017

Esquisses diverses. A Coruña. 1894~1895. Graphite pencil on paper. 13,5 x 19,5 cm. Museu Picasso, Barcelona. Carnet A Coruña 2. Donation 1970.

OPP.94:114; MPB:111.498r; PP.9495:030





Esquisses diverses. A Coruña. 1894~1895. Graphite pencil & conté pencil on paper. 13,5 x 19,5 cm. Museu Picasso, Barcelona. Carnet A Coruña 2. Donation 1970.

OPP.94:115; MPB:111.506r; PP.9495:045

Esquisse effacé. A Coruña. 1894~1895. Graphite pencil on paper. 19,5 x 13,5 cm. Museu Picasso, Barcelona. Carnet A Coruña 2. Donation 1970.

OPP.94:117; MPB:111.495r; PP.9495:024





Deux études de nus masculins et pied. A Coruña. 1894~1895. Graphite pencil on paper. 13,5 x 19,5 cm. Museu Picasso, Barcelona. Carnet A Coruña 2. Donation 1970.

OPP.94:118; MPB:112.481; PP.9495:056

Scène de rue. A Coruña. 1894~1895. Graphite pencil on laid paper. 15,5 x 25,2 cm. Museu Picasso, Barcelona. Donation 1970.

OPP.94:119; C:395; MPB:110.391r; PP.9495:003; TO.97*:50b





Étude de main droite et autres esquisses. A Coruña. 1894~1895. Graphite pencil & pen on paper. 13,5 x 19,5 cm. Museu Picasso, Barcelona. Carnet A Coruña 2. Donation 1970.

OPP.94:120; MPB:111.492r; PP.9495:018

Étude de poing droit. A Coruña. 1894~1895. Graphite pencil & pen on paper. 13,5 x 19,5 cm. Museu Picasso, Barcelona. Carnet A Coruña 2. Donation 1970.

OPP.94:121; MPB:111.494r; PP.9495:022; MG.15:271p





Étude de deux mains jointes. A Coruña.
1894~1895. Graphite pencil on paper. 13,5 x 19,5
cm. Museu Picasso, Barcelona. Carnet A Coruña 2.
Donation 1970.

OPP.94:122; MPB:111.509r; PP.9495:050

Étude de main droite. A Coruña.
1894~1895. Graphite pencil on paper. 13,5
x 19,5 cm. Museu Picasso, Barcelona.
Carnet A Coruña 2. Donation 1970.

OPP.94:123; MPB:111.508r; PP.9495:048





Étude de main droite. A Coruña. 1894~1895. Pen, graphite pencil & conté pencil on paper. 13,5 x 19,5 cm. Museu Picasso, Barcelona. Carnet A Coruña 2. Donation 1970.

OPP.94:124; MPB:111.491r; PP.9495:016

Étude de mains jointes. A Coruña. 1894~1895. Pen on paper. 13,5 x 19,5 cm. Museu Picasso, Barcelona. Carnet A Coruña 2. Donation 1970.

OPP.94:126; MPB:111.493r; PP.9495:020





Jeune fille assise sur une chaise, de profil et tête. A Coruña. 1894~1895. Pen, conté pencil & graphite pencil on paper. 19,5 x 13,5 cm. Museu Picasso, Barcelona. Carnet A Coruña 2. Donation 1970.

OPP.94:128; MPB:111.490; PP.9495:013

Personnage masculin au chapeau, pistolet et épée. A Coruña. 1894~1895. Graphite pencil & conté pencil on paper. 19,5 x 13,5 cm. Museu Picasso, Barcelona. Carnet A Coruña 2. Donation 1970.

OPP.94:130; MPB:111.506; PP.9495:044



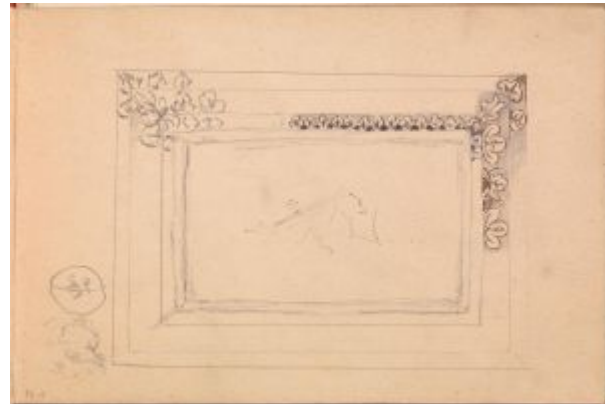


Projet pour un tambourin. A Coruña. 1894~1895. Graphite pencil on paper. 19,5 x 13,5 cm. Museu Picasso, Barcelona. Carnet A Coruña 2. Donation 1970.

OPP.94:131; MPB:111.511r; PP.9495:053; MG.15*:110

Projet pour un cadre. A Coruña. 1894~1895. Graphite pencil & pen on paper. 13,5 x 19,5 cm. Museu Picasso, Barcelona. Carnet A Coruña 2. Donation 1970.

OPP.94:132; MPB:111.498; PP.9495:029; BA.12b*:237p





Portrait de Maria Cristina, reine régente d'Espagne. A Coruña. 1894~1895. Graphite pencil on paper. 19,5 x 13,5 cm. Museu Picasso, Barcelona. Carnet A Coruña 2. Donation 1970.

OPP.94:133; MPB:111.502r; PP.9495:038; MG.15*:109

Homme debout au chapeau. A Coruña. 1894~1895. Ink on French book from Instituto da Guarda. S/U. Private collection, A Coruña.

OPP.94:152





Les poules. A Coruña. 1894~1895. Oil on panel.
8 x 15 cm. Private collection.

OPP.94:165; PE.17*:82p

Etudes d'animaux. A Coruña.
1894~1895. Oil on paper. 14 x 20 cm.
Museu Picasso, Barcelona. Donation 1970.

OPP.94:166; MPB:110.106; PP.95:032





Esquisses. Barcelona. 1894~1895. Oil on paper.
12 x 16,1 cm. Museu Picasso, Barcelona. Donation
1970.

OPP.94:168; MPB:110.118; PP.95:033

La repasseuse. A Coruña. 1894~1895. Graphite on paper.
20,8 x 13 cm. Museu Picasso, Barcelona. Donation 1970.

OPP.94:169; MPB:110.902r; PP.9495:007





Trois têtes. A Coruña. 1894~1895. Oil on wood. 15,6 x 10 cm. Museu Picasso, Barcelona. Donation 1970.

OPP.94:171; MPB:110.154; PP.95:034

Galliner. A Coruña. 1894~1895. Oil on wood. 9,9 x 15,7 cm. Museu Picasso, Barcelona. Donation 1970.

OPP.94:172; MPB:110.155; PP.95:027





Vautour. A Coruña. 1894~1895. Oil on wood. 15,6 x 10,1 cm. Museu Picasso, Barcelona. Donation 1970.

OPP.94:173; MPB:110.161; PP.95:029; TO.94*:n/a

Agneau et coq. A Coruña. 1894~1895. Oil on wood. 17,1 x 20,9 cm. Museu Picasso, Barcelona. Donation 1970.

OPP.94:175; MPB:110.199; PP.95:030





Esquisses. A Coruña. 1894~1895. Graphite on paper. 13 x 20,8 cm. Museu Picasso, Barcelona. Donation 1970.

OPP.94:188; MPB:110.902; PP.9495:006